

FEATURES/BENEFITS

DODGE[®]



D-LOK

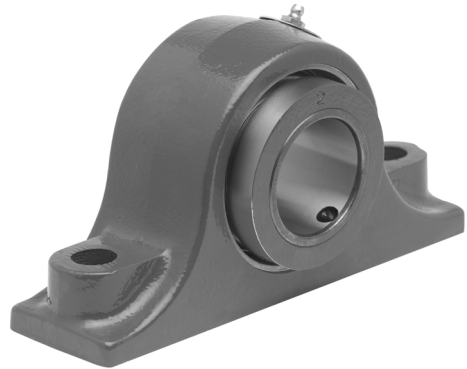
E-S2000

Type E Family

Specialty Tapered

S-2000

UNISPHERE II



- Interchangeable with Type E style pillow blocks and flanges
- Same proven DODGE S2000 double row spherical insert
- 65° springlock collar mounting
- Up to $\pm 1^\circ$ misalignment capability
- Seal land on OD of inner ring maintains full contact pressure even when misaligned
- High capacity double row spherical bearing
- 2 bolt pillow blocks in sizes 1-3/8 to 3-7/16"
- 4 bolt pillow blocks in sizes 2-7/16 to 4-15/16"
- Flange bearings in sizes 1-3/8 to 4-7/16"
- Piloted flange bearings in sizes 1-3/8 to 4-15/16"