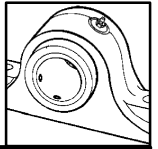
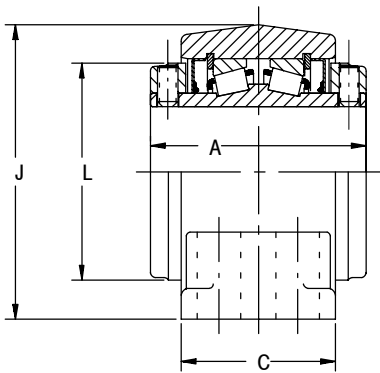
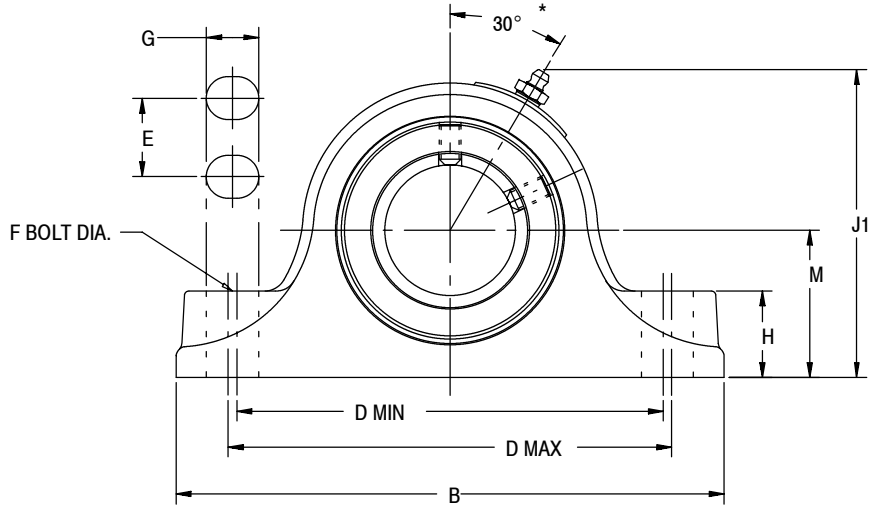


# SELECTION/DIMENSIONS

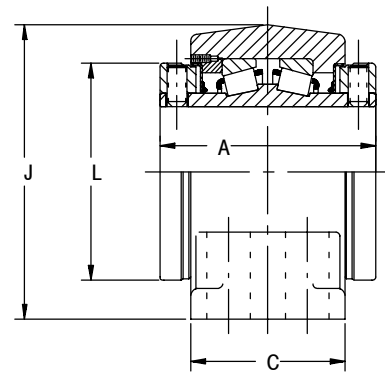


## Type E Pillow Block – Inch

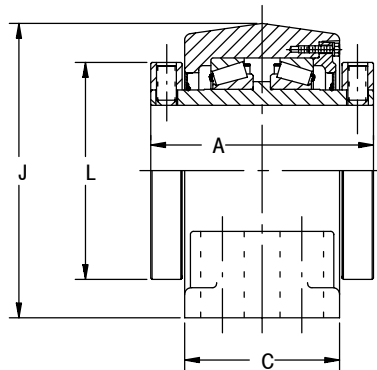
### 4-BOLT BASE



2-1/4" THRU 3" CONSTRUCTION



3-3/16" THRU 5" CONSTRUCTION

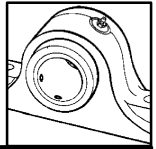


5-7/16" THRU 7" CONSTRUCTION

\* 5-7/16" THRU 7" - 45°

ENGINEERING/TECHNICAL PAGE B5-17	ACCESSORIES/MODIFICATION PAGE B5-58	SELECTION / E-TECT SEALS PAGE B5-68	EASY SELECTION PAGE B5-15
-------------------------------------	--	--	------------------------------

# SELECTION/DIMENSIONS



## Type E Pillow Blocks – Inch

### 4-BOLT BASE

GRAY IRON			
SHAFT SIZE INCHES #	PART NUMBER	PART NAME	WEIGHT LBS (APPROX)
2-1/4	<b>023023</b>	P4B-E-204R	20
2-7/16	<b>023024</b>	P4B-E-207R	20
2-1/2	<b>023025</b>	P4B-E-208R	19
2-11/16	<b>023026</b>	P4B-E-211R	30
2-3/4	<b>023027</b>	P4B-E-212R	28
2-15/16	<b>023028</b>	P4B-E-215R	28
3	<b>023029+</b>	P4B-E-300R	28
3-3/16	<b>023030+</b>	P4B-E-303R	47
3-1/4	<b>023031</b>	P4B-E-304R	47
3-7/16	<b>023032</b>	P4B-E-307R	46
3-1/2	<b>023033</b>	P4B-E-308R	45
3-15/16	<b>023690</b>	P4B-E-315R	69
4	<b>023691</b>	P4B-E-400R	69
4-7/16	<b>023692</b>	P4B-E-407R	85
4-1/2	<b>023693</b>	P4B-E-408R	85
4-15/16	<b>023694</b>	P4B-E-415R	134
5	<b>023695</b>	P4B-E-500R	133
5-7/16	<b>023040</b>	P4B-E-507R	230
5-15/16	<b>023041</b>	P4B-E-515R	250
6	<b>023042</b>	P4B-E-600R	245
6-7/16	<b>023043+</b>	P4B-E-607R	356
6-1/2	<b>023044</b>	P4B-E-608R	350
6-15/16	<b>023045</b>	P4B-E-615R	340
7	<b>023046+</b>	P4B-E-700R	335

CAST STEEL			
SHAFT SIZE INCHES #	PART NUMBER	PART NAME	WEIGHT LBS (APPROX)
2-1/4	-----	-----	-----
2-7/16	-----	-----	-----
2-1/2	-----	-----	-----
2-11/16	-----	-----	-----
2-3/4	-----	-----	-----
2-15/16	-----	-----	-----
3	-----	-----	-----
3-3/16	-----	-----	-----
3-1/4	-----	-----	-----
3-7/16	-----	-----	-----
3-1/2	-----	-----	-----
3-15/16	<b>023070</b>	SP4B-E-315R	65
4	<b>023071</b>	SP4B-E-400R	65
4-7/16	<b>023072</b>	SP4B-E-407R	81
4-1/2	<b>023073</b>	SP4B-E-408R	81
4-15/16	<b>023074</b>	SP4B-E-415R	132
5	<b>023075</b>	SP4B-E-500R	132
5-7/16	-----	-----	-----
5-15/16	-----	-----	-----
6	-----	-----	-----
6-7/16	-----	-----	-----
6-1/2	-----	-----	-----
6-15/16	-----	-----	-----
7	-----	-----	-----

# Consult DODGE For Sizes Not Listed.

+ Non-stock -- Consult DODGE For Delivery

# Consult DODGE For Sizes Not Listed.

+ Non-stock -- Consult DODGE For Delivery

SHAFT SIZE INCHES	A	B	C*	D MIN	D MAX	E	F BOLT DIA	G	H	J	J1	L	M
2-1/4													
2-7/16	4	10-1/2	3-1/2	8-5/16	8-11/16	1-7/8	5/8	7/8	1-5/8	5-1/2	5-5/8	4-1/16	2-3/4
2-1/2													
2-11/16													
2-3/4	4-1/2	12	4	9-3/16	9-13/16	2-1/8	5/8	1	1-7/8	6-1/4	6-11/32	4-23/32	3-1/8
2-15/16													
3													
3-3/16													
3-1/4	5	13-1/2	4-1/2	10-3/4	11-1/4	2-3/8	3/4	1-3/16	2-1/4	7-1/2	7-1/2	5-17/32	3-3/4
3-7/16													
3-1/2													
3-15/16	6-1/4	15-1/4	4-1/2	12-1/4	12-3/4	2-1/4	3/4	1-1/8	2-7/16	8-1/2	8-7/16	6	4-1/4
4													
4-7/16	6-3/4	16-5/8	4-5/8	13-1/4	13-3/4	2-1/2	3/4	1-1/8	2-3/4	9-3/8	9-9/32	6-7/16	4-3/4
4-1/2													
4-15/16	7-1/4	18-1/2	5-1/8	15-1/4	15-3/4	2-7/8	7/8	1-1/4	3	10-7/8	10-11/16	7-7/16	5-1/2
5													
5-7/16													
5-15/16	9	22	6-1/4	17-3/8	19-1/8	3-3/4	1	2	3-1/4	13-3/16	----	9-3/8	6-11/16
6													
6-7/16													
6-1/2	10-1/2	26	7-1/8	21-1/4	23-1/4	4-5/8	1	2	3-11/16	14-15/16	----	11-3/8	7-1/2
6-15/16													
7													

Pre-Dowel Hole Locations For Precision Positioning – See Page B9-30 – B9-31

SPECIFICATIONS PAGE B5-7	SELECTION/DIMENSIONS TYPE K PAGE B5-11/B5-34	SELECTION/DIMENSIONS DOUBLE-INTERLOCK PAGE B5-11/B5-44	SELECTION/DIMENSIONS TAF PAGE B5-11/B5-52
-----------------------------	--	--	---